



BICS ADVANCED TRAFFIC ANALYTICS

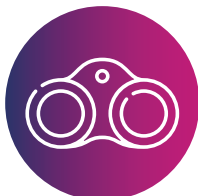
Ensuring quality of service for IoT

To ensure optimal performance of large IoT projects covering multiple geographies, you need visibility, insight and control over your connected devices. BICS SMART Webvision has been specifically developed to provide IoT enterprises with the capabilities to identify, investigate and resolve issues in a light-touch and low-cost model.

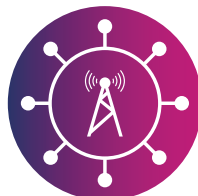
Global infrastructure, global reach, global organization



360° visibility of device performance



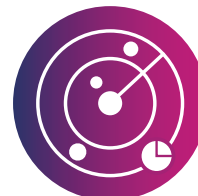
Real-time 3G/4G network performance monitoring



Network, traffic and business intelligence

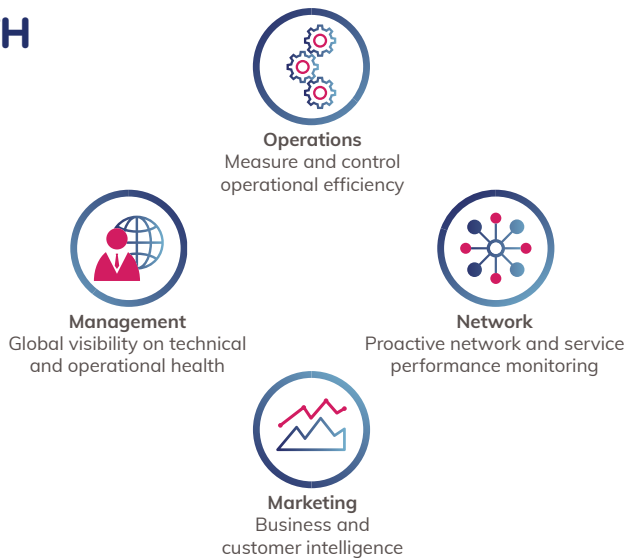


Live subscriber tracking and management



GREATER VISIBILITY OF TRAFFIC WITH SOPHISTICATED REPORTING

Fully owned and developed in-house by BICS to support large-scale IoT projects, SMART Webvision enables network, operations, marketing and management teams to ensure deployments are running optimally. Completely flexible and customizable, you can select the level of granularity you need for analysis and reporting via a range of modular options.

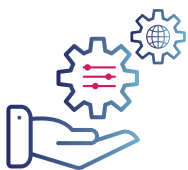


KEY FEATURES OF SMART WEBVISION

- ✓ Single source of real-time information on your international IoT deployment
- ✓ Detailed transaction level data
- ✓ Aggregated historical data
- ✓ Cross-technology traffic analytics
- ✓ Modular platform
- ✓ Cloud-based: no CAPEX, maintenance or upgrade costs



OFFER AN IMPROVED CUSTOMER EXPERIENCE



Ensure your customers receive the highest quality experience by monitoring thousands of devices around the world. Proactively detect traffic and potential issues in real time, to identify and resolve before they impact quality of service. Build the business and customer intelligence capabilities of your IoT deployment with minimal effort, cost and resources, with BICS.

GAIN FULL CONTROL OVER YOUR CONNECTED BUSINESS VIA A GLOBAL NETWORK OF MORE THAN 400 MOBILE OPERATORS.



No.1 roaming provider in the world: fully owned global infrastructure, regional platforms and global support teams



API-based deployment: all functionalities available through APIs, with flexible customization



Optimized wholesale business model: backed by BICS' unique roaming exchange platform for M2M/IoT



Analytics and business intelligence: optimize deployment performance



End-to-end self-management portal: the central enabler for your connected business